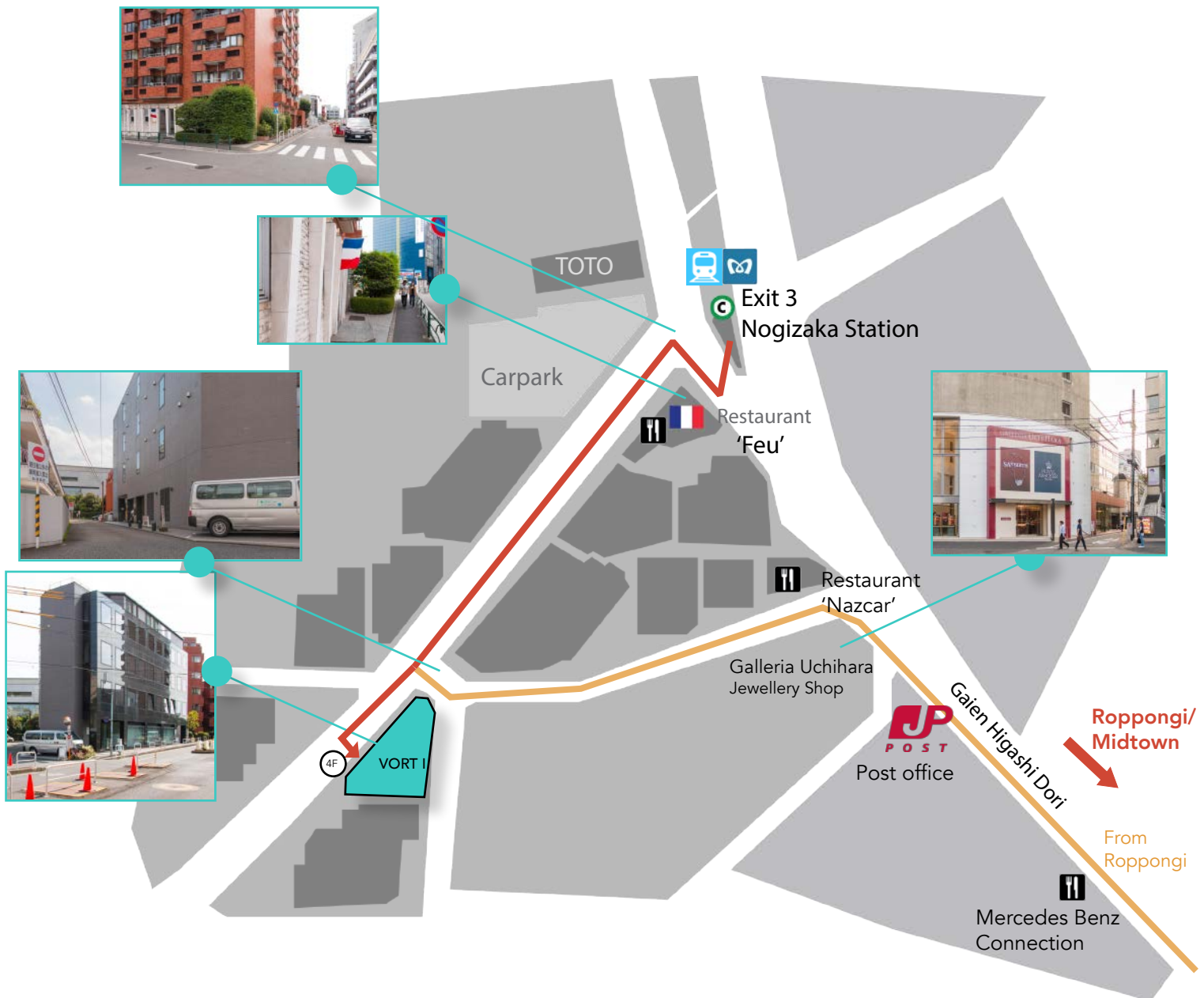


HOW TO FIND US

Carter JMRN Studio 4



VORT Nogizaka I Bldg 4F,
Roppongi 7-2-29,
Minato-ku, Tokyo 
106-0032
+81 3 6434 0520



STUDIO 4

Market Research Facility Information

Our modern studio is outfitted with state-of-the-art equipment for use in group and in-depth interviews (B2C and B2B), company meetings and workshops. It is conveniently located only minutes from Tokyo Midtown in Roppongi. Our bilingual (Japanese and English) staff will help you ensure the success of your meetings.

Contact us:

Mr Christopher Lee
studio@the-carter-group.com
03-6434-0520



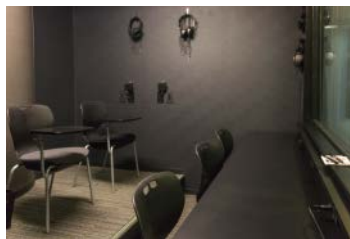
Room Capacities

Interview room 6 - 10 people

Viewing room 9 - 10 people

Meeting room* 4 - 5 people

* The Meeting room has a monitor with a real-time feed of the Interview room, allowing it to be used as a second Viewing room



Facility Features

- Soundproofed Magic Mirror
- High-quality audio system
- Real-time streaming and Focus Vision equipped
- Wi-Fi (wireless LAN)
- Mini kitchen



Prices:

Morning:
9:30 - 12:30
¥25,000*

Afternoon:
13:30 - 17:00
¥35,000*

Night:
18:00 - 21:30
¥45,000*

* Please note, there is an extra charge of ¥5,000 for every 30 minutes of studio over time

DIRECTIONS

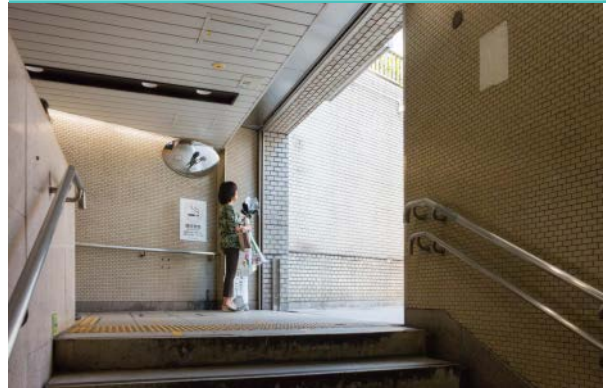
From Nogizaka Station, Exit 3

1



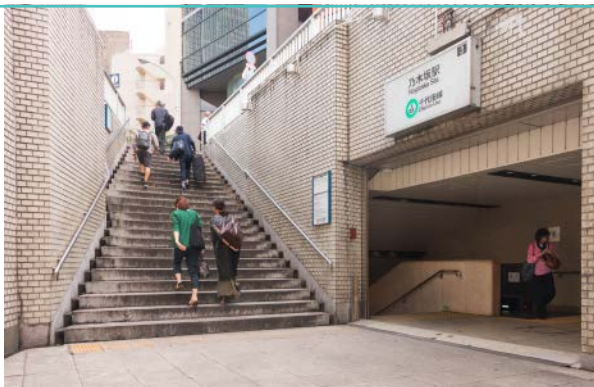
Take exit 3 on your right after you go through the ticket gate

2



Go up the escalators/stairs until you reach the outside

3



Take the stairs on your right

4



You will see a French restaurant 'Feu' on the opposite side of the road

5



Cross the road towards the French restaurant 'Feu'

6



Turn left on the corner of 'Feu'

DIRECTIONS

(continued)

7



You will look down this long street.
Walk down this street towards the end

8



You will see our big, black building.

9



You will see an entrance after the glass windows on your left

10



You will see the entrance to our building

11



Come inside the lobby

12



Take the elevator up to the 4th floor